





Pancho Sier

H. Conti

Sodan

Venezuela

Bolivia

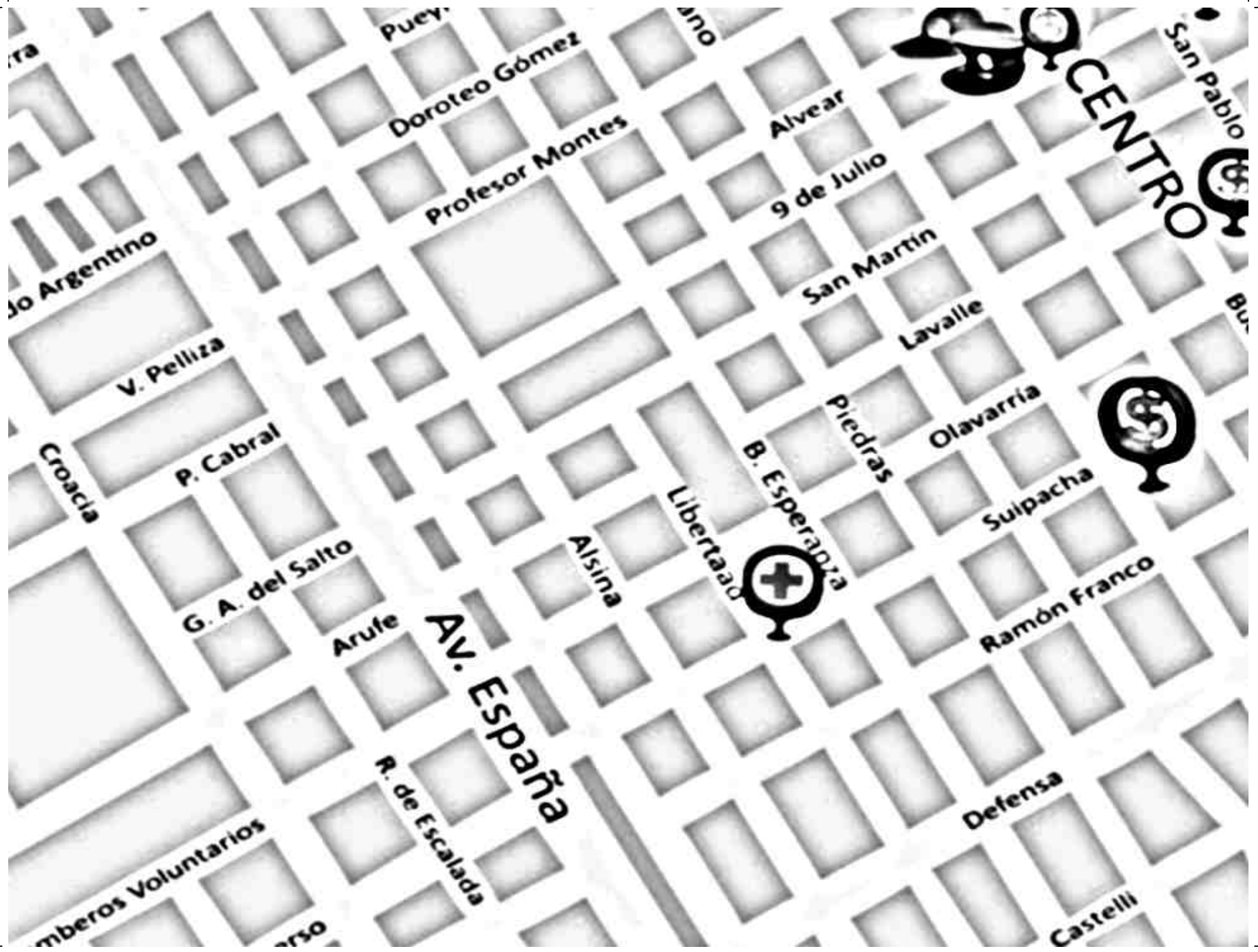
A. Cepeda

Peru

Paraguay

Uruguay

J. Hernandez



ra

do Argentino

Croacia

mberos Voluntarios
orso

Pueyr

Doroteo Gómez

Profesor Montes

ano

Alvear

9 de Julio

San Martín

Lavalle

San Pablo

CENTRO

Bu

V. Pelliza

P. Cabral

G. A. del Salto

Arufe

Av. España

R. de Escalada

Alsina

Libertad

B. Esperanza

Piedras

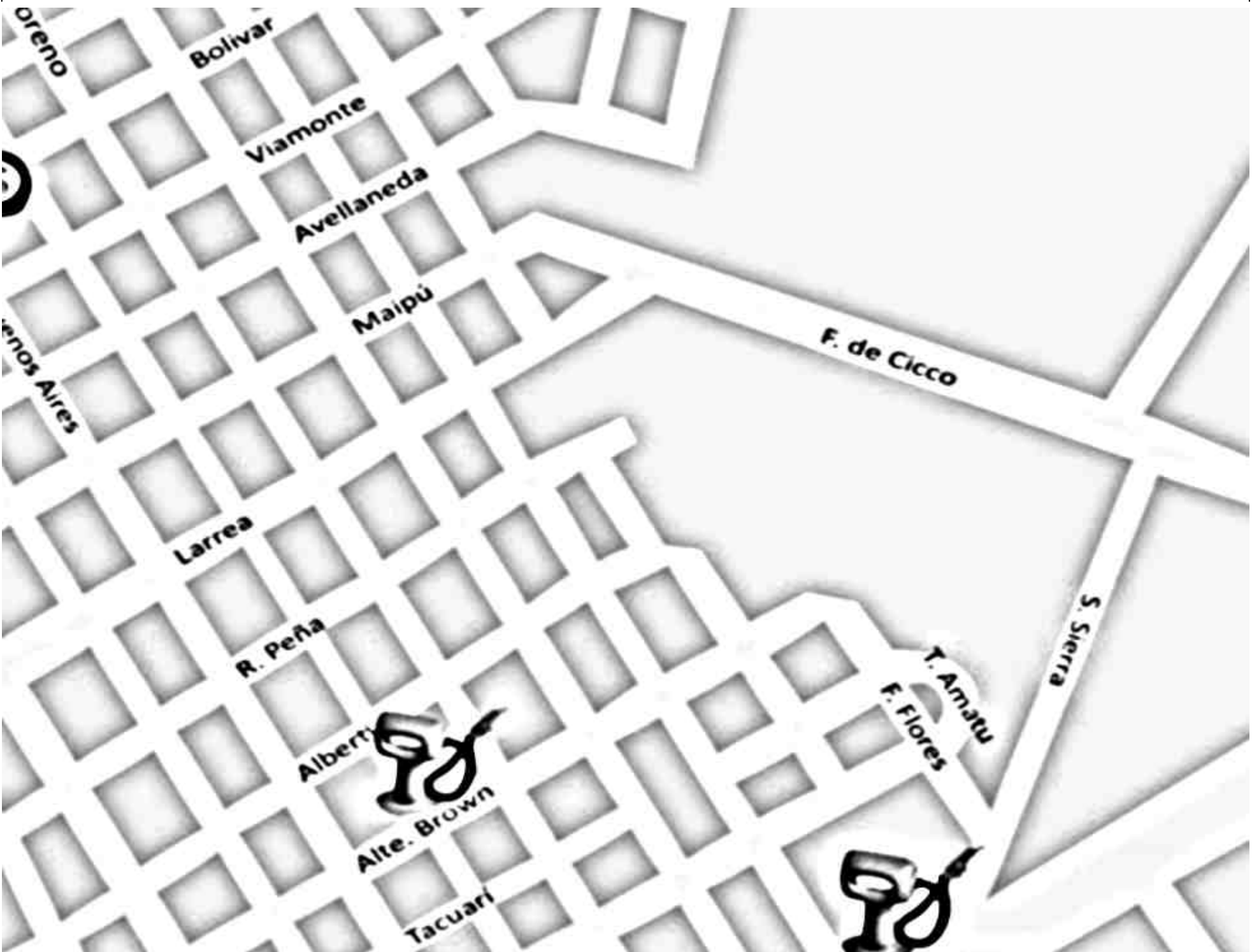
Olavarría

Suipacha

Ramón Franco

Defensa

Castelli



Orenano

Bolivar

Viamonte

Avellaneda

Maipú

Larrea

R. Peña

Alberti

Alte. Brown

Tacuari

F. de Cicco

T. Amatu

F. Flores

S. Sierra



A stylized map of a road network. The roads are represented by thick white lines on a light gray background. The network consists of several interconnected roads forming various polygonal shapes. A central road runs diagonally from the bottom-left towards the top-right. This central road is labeled with the text "RUTA 32" in a bold, black, sans-serif font, oriented along the road's path. Other roads branch off from this central road, creating a complex web of paths. The overall appearance is that of a simplified, schematic map of a road system.

RUTA 32



J. Corazar

A. Jaureche

Mexico

Guayana

Mexico

Ceballos

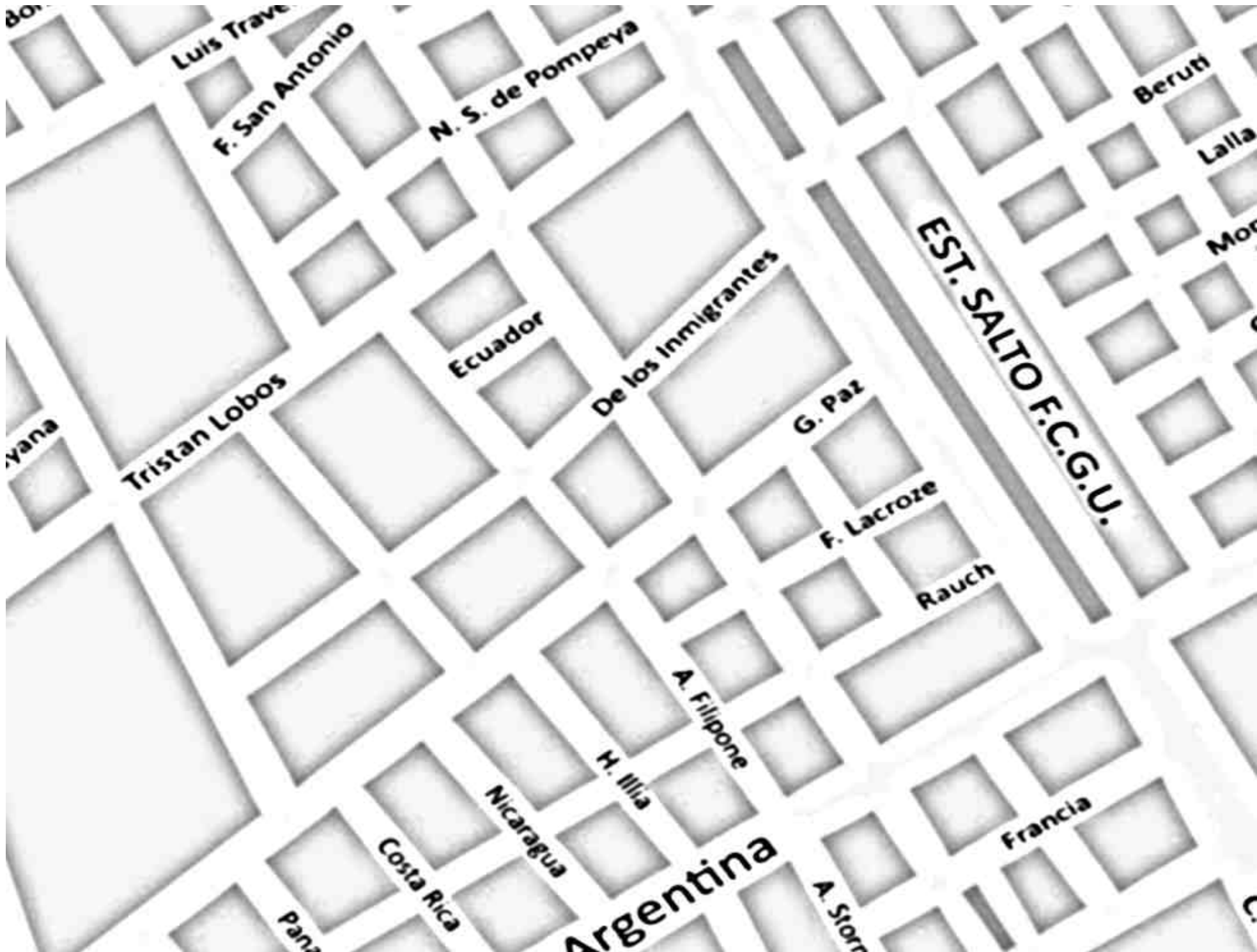
Guayana

Pje. Pergamino

R. Rojas

Marech

RUTA 31





French

Chiclana

Av. V. Gemme

Berdier

F. Blanco

Av. Dardo Lafalce

Reg. Gonzalez

S. del Estero

San Luis

Catamarca

F. Palm

1 de Mayo

Dr. Bonfiglio

Dr. Montes

Formos

T. y Lira

Prof. Dominguez

Av. H. Yrigoyen

Tucuman

W. Almiron

Av. Ita

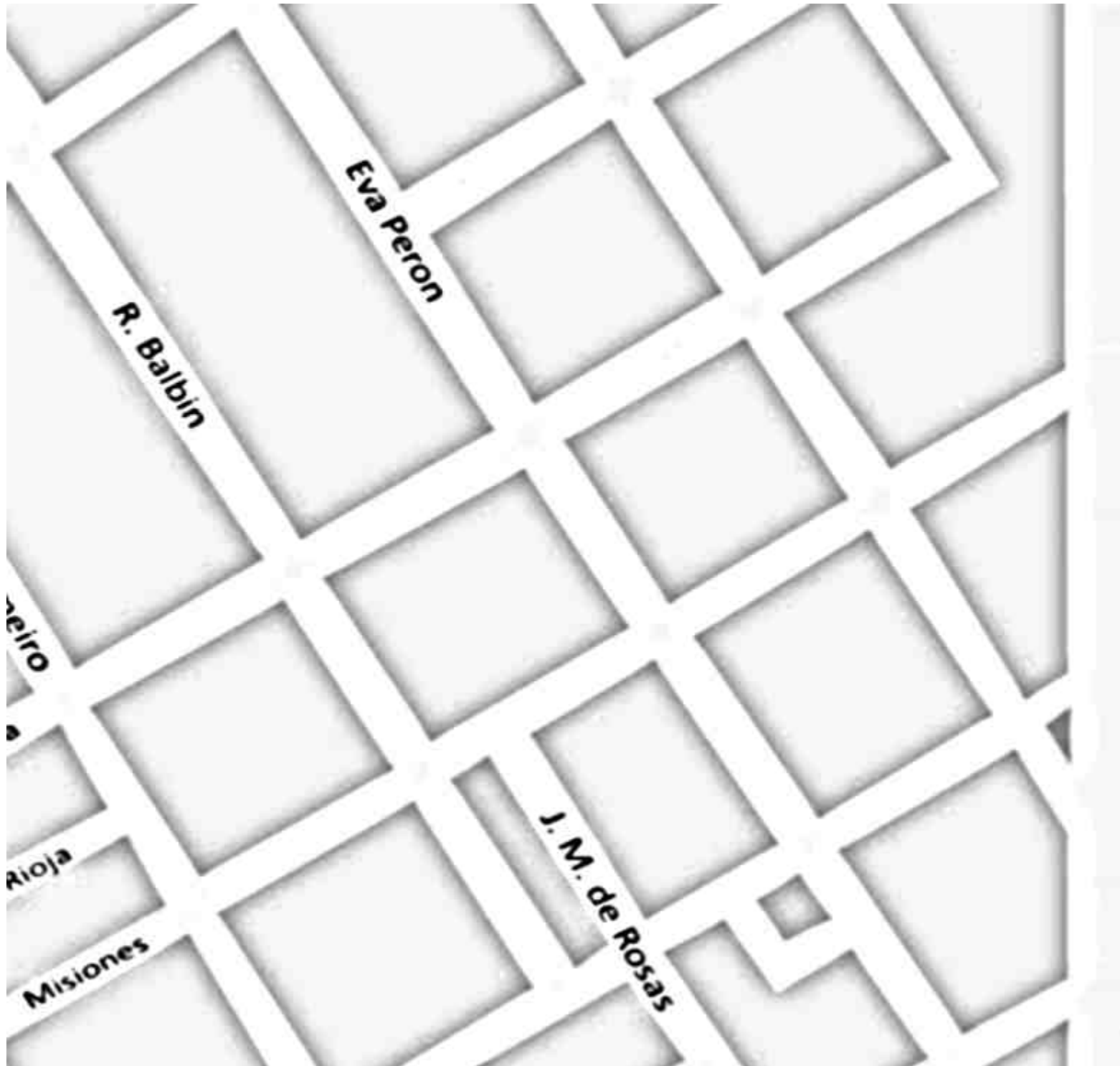
Chacab

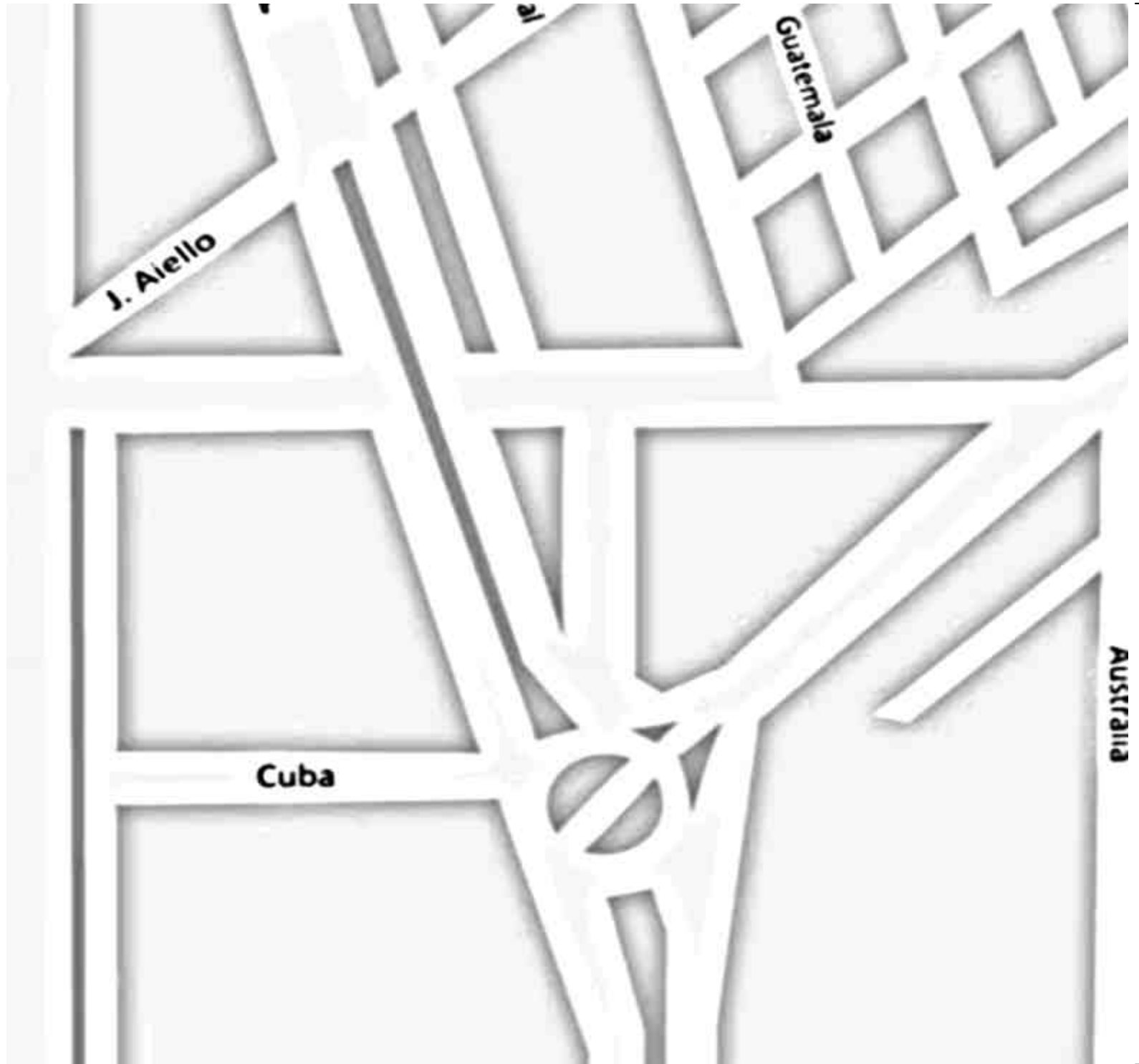
San

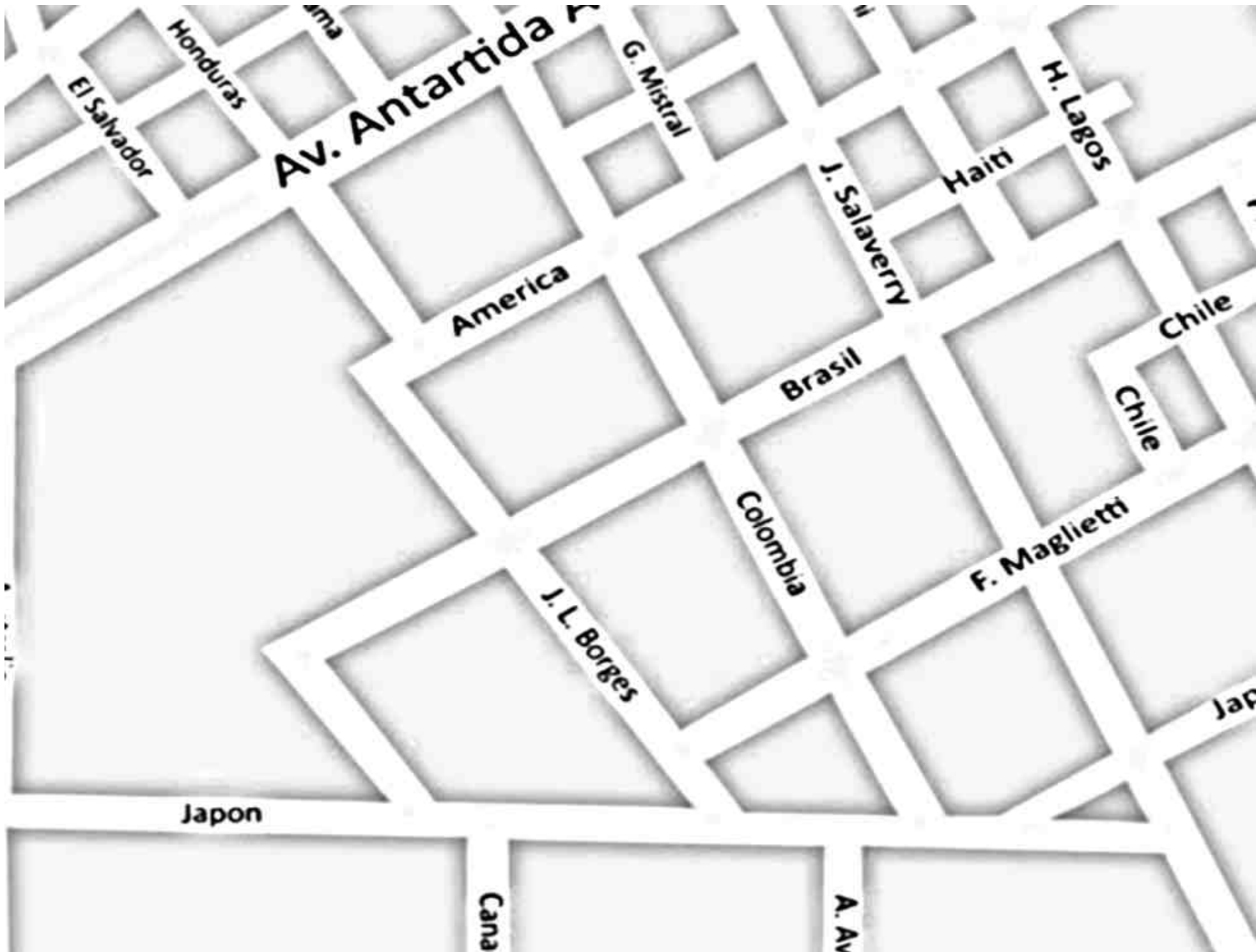
ites

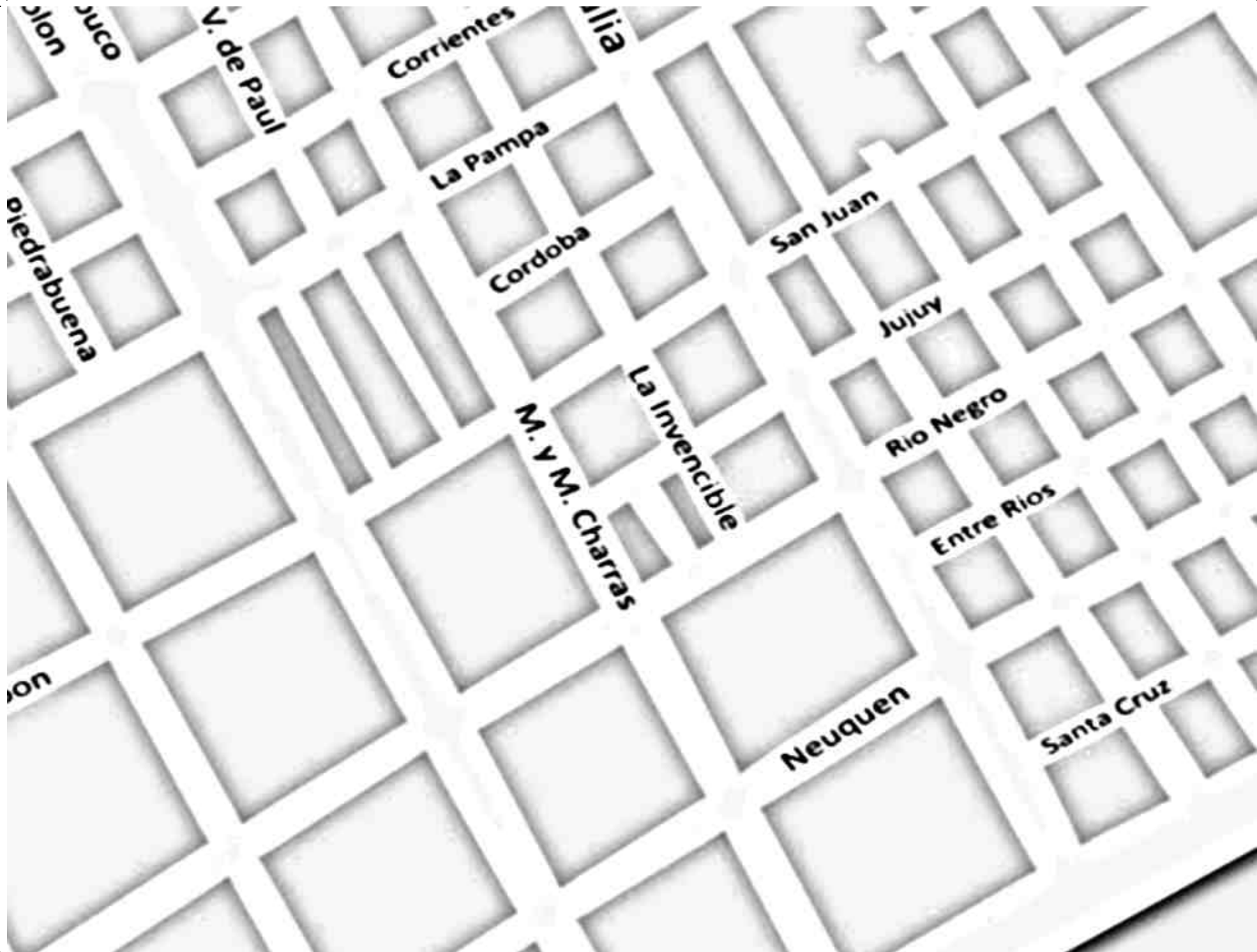
Guemes

Arenales











Chaco

Santa Fe

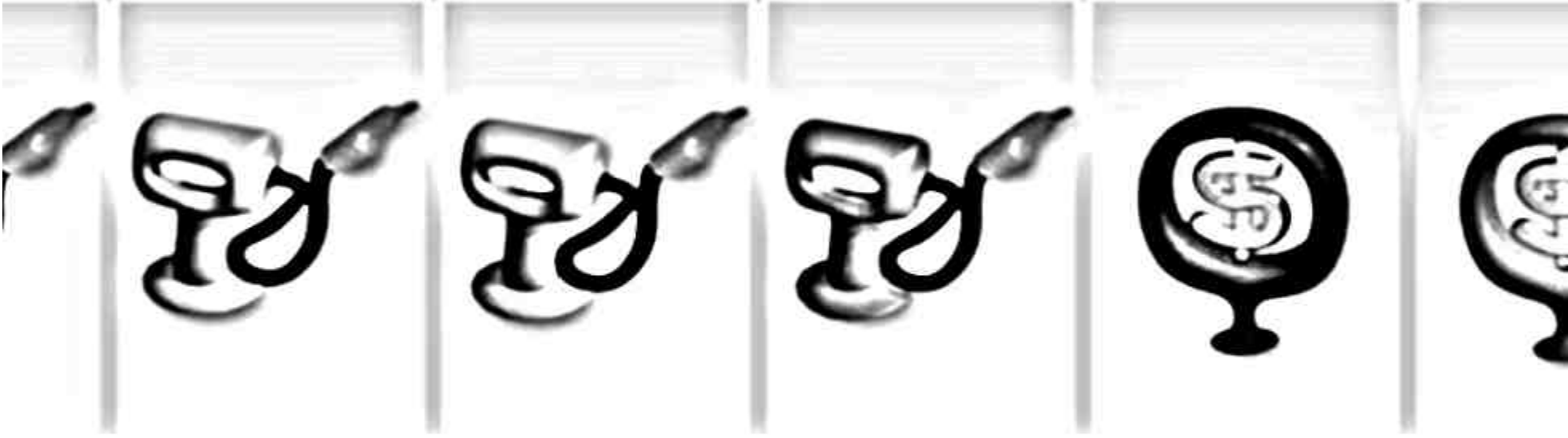
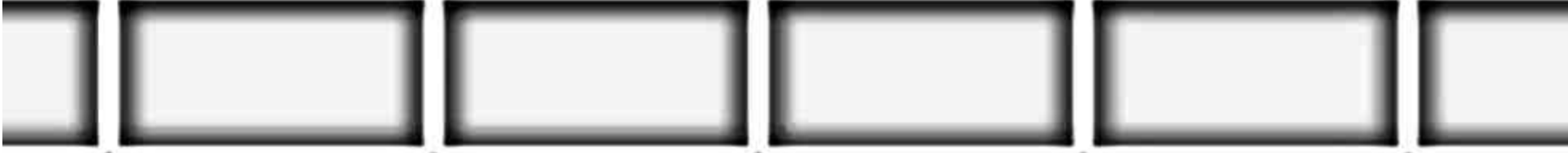
Chubut

RUTA 191




SALTO





da
alos



